

0392024078

PCE Electric cooling pump



The Bosch coolant pump PCE is the reliable and efficient solution for supporting various thermal circuits. Designed with decades of experience in thermo-, fluid, and energy circuits, this pump has proven itself millions of times worldwide in 24V and 12V applications.

It is ideally suited for battery cooling in electric vehicles, as well as for component cooling in electric buses and vans. However, it is also perfectly suitable for use in internal combustion engines. The brushless pump can be used for heating or after-run cooling of various mechanical components, such as for cooling exhaust aftertreatment systems (SCR).

The product is being discontinued. Available until 01.11.2025.

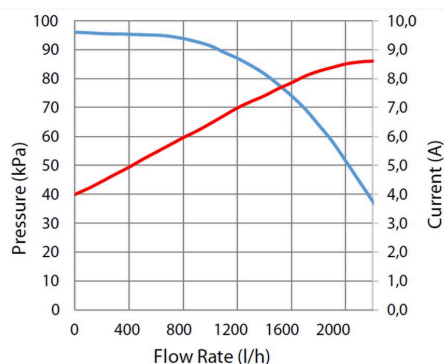
New generation: [039202453G](#) .

- **Degree of protection:** IPX7
- **Operating mode:** S1
- **Nominal Voltage:** 12 V

[Contact us!](#)

Product Specification

Technical data and performance curve



Flow rate (l/h): 1000

Nominal pressure (bar): 0,85

Nominal Voltage (V): 12

Weight (kg): 0,66

Control: PWM

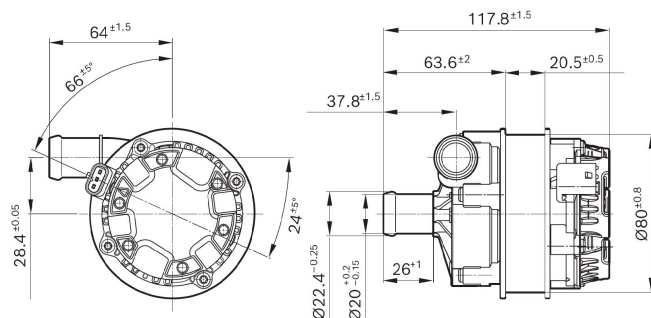
Medium: Water/Glycol (50/50)

Product images and pictures are for demonstration purposes only, the actual product may differ from the picture shown. The quotation drawing is binding.

Robert Bosch GmbH, Auf der Breit 4, 76227 Karlsruhe, Germany www.bosch-ibusiness.com



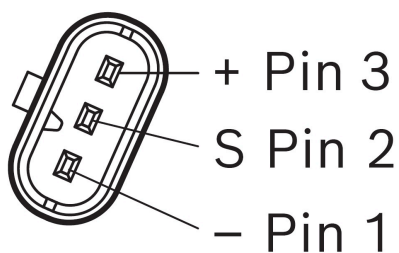
Dimensions



Please contact us if you need a 3d model!

[Contact](#)

Connector



Housing:

- TE Connectivity MCON 1.2 1488991-6 (with CPA),...-2 w/o CPA
- Molex MXP120 34900-3102

Terminal:

- Bosch 1 928 498 811
- Tyco / Molex MCON 1.2 1670146-3 – Ag plated (20awg)
- KOSTAL MLK 1.2 [32124734130]

Seal:

- Bosch 1 928 300 936
- TE Connectivity 967067-1 (20 awg)
- KOSTAL 10800507250

Application examples

- Cooling of batteries
- Cooling of DC/AC converters (inverters)
- Heating or cooling of components in the exhaust system, e.g. SCR systems



Downloads

You may also be interested in:

To Product family: [Catalogue](#)

