

0130115604

# GBM-S Compact Blower



Ensure reliable air flow across the thermal system even at low speeds: Bosch blowers and fans have been developed to achieve the lowest possible noise level. They are available worldwide in single and bulk packaging and can be used in 24V and 12V applications, e.g. for heating, ventilation and cooling.

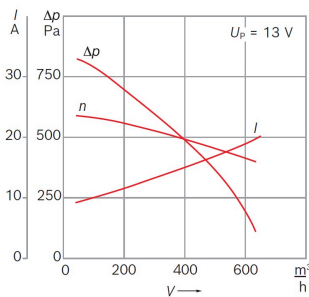
- **Degree of protection:** IP 13
- **Operating mode:** S1
- **Nominal Voltage:** 12 V

[Contact us!](#)



## Product Specification

### Technical data and performance curve



**Nominal Voltage (V):** 12

**Nominal current (A):** 14

**Nominal speed (rpm):** 4468

**Air flow (m³/h):** 400

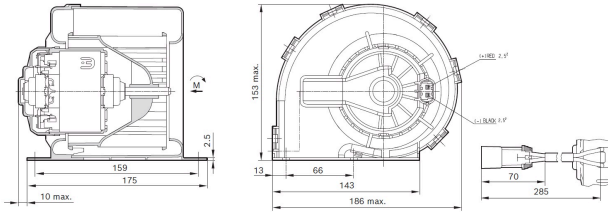
**Pressure difference (Pa):** 470

**Hall Sensor:** No

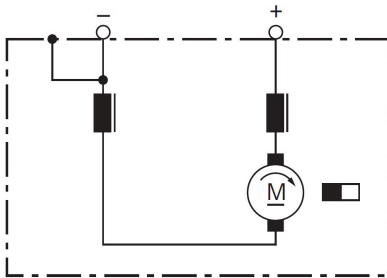
## Dimensions

Please contact us if you need a 3d model

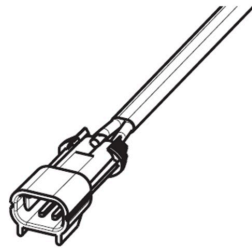
[Contact](#)



## Circuit diagram



## Connector



Black (-)      Red (+)

### Housing:

Lisi F513A

### Locker:

-

### Terminal:

TE 964308-1

---

## Features and Benefits

- Decades of field experience and production in accordance with state-of-the-art automotive quality standards: For proven product quality and a long service life
- Available with or without PWM technology: To attend different customer requirements
- Depending on the model, protective functions such as automatic shutdown in case of obstruction, thermal fuse and reverse polarity protection: Ensure safe operation and high reliability
- Operating mode S1: Suitable for continuous operation

---

## Downloads

You may also be interested in:

To Product family: [Catalogue](#)