

0132805073

# ECA-S2 Brushless Actuator



Discover the ECA-S2 - compact EC motor with high power density for precise adjustment tasks. The ECA-S2 transmission actuator was developed specifically for adjustment tasks in the powertrain and chassis. The versatile actuator serves as a clutch and shift actuator and works particularly reliably even under harsh ambient conditions.

Bosch supports e-mobility with innovative and economical solutions, such as the ECA-S2 transmission actuator, which is equipped with a Hall sensor and an encoder sent. This enables precise control and adjustment of the motor characteristics. The dynamic BLDC motor also offers a high torque density in a very small installation space.

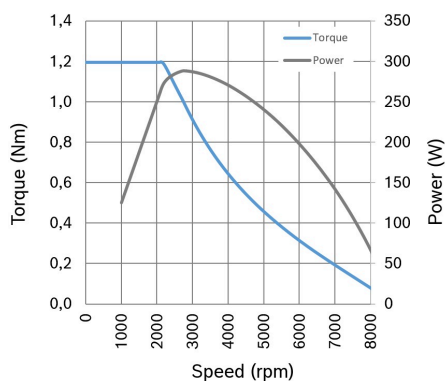
Rely on the ECA-S2 gear actuator and benefit from a reliable and powerful solution for your drive systems.

- **For high temperature applications up to 140°C**
- **Nominal voltage: 12 V**

[Contact us!](#)

## Product Specification

### Technical data and performance curve



**Nominal power (W): 240**

**Nominal current (A): 69**

**Nominal speed (rpm): 5000**

**Nominal torque (Nm): 0,45**

**Stall torque (Nm): 1,3**

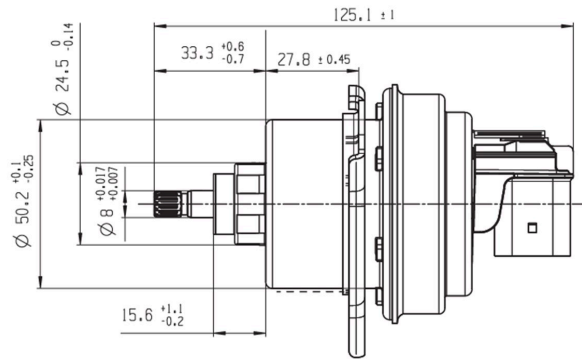
**Hall Sensor: Yes**

Product images and pictures are for demonstration purposes only, the actual product may differ from the picture shown. The quotation drawing is binding.

Robert Bosch GmbH, Auf der Breit 4, 76227 Karlsruhe, Germany [www.bosch-ibusiness.com](http://www.bosch-ibusiness.com)



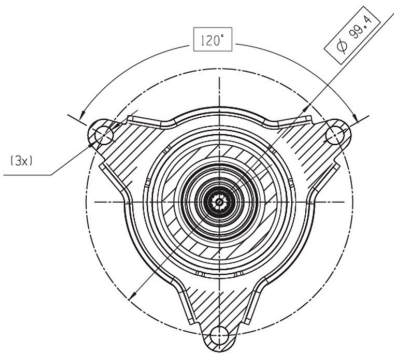
### Dimensions



Please contact us if you need a 3d model

[Contact](#)

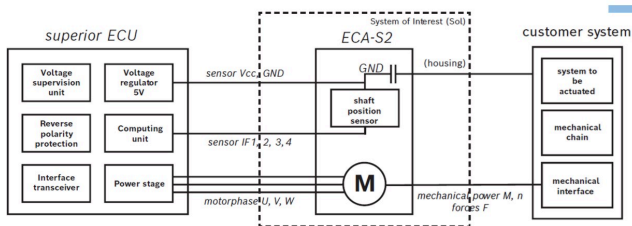
### Dimensions



Please contact us if you need a 3d model

[Contact](#)

### Circuit diagram

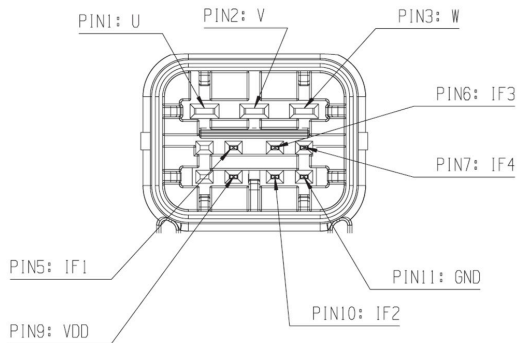


Product images and pictures are for demonstration purposes only, the actual product may differ from the picture shown. The quotation drawing is binding.

Robert Bosch GmbH, Auf der Breit 4, 76227 Karlsruhe, Germany [www.bosch-ibusiness.com](http://www.bosch-ibusiness.com)

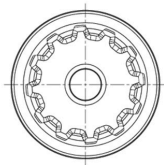


## Connector

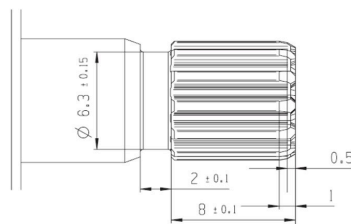


## Drive interface

### Specifications



DIN 5480-1  
12 teeth



## Potential applications

- Shift/select function in the transmission
- Actuating clutches or gear shift units in conventional and electrified transmissions for different hybrid topologies and voltage levels
- Actuating parking locks in e-axle transmissions, in clutches or gear shift units in cars, commercial vehicles and two-wheelers
- Automated coupling and uncoupling of connections that would otherwise have to be released by hand

## Downloads

You may also be interested in:

To Product family: [Catalogue](#)

Product images and pictures are for demonstration purposes only, the actual product may differ from the picture shown. The quotation drawing is binding.

Robert Bosch GmbH, Auf der Breit 4, 76227 Karlsruhe, Germany [www.bosch-ibusiness.com](http://www.bosch-ibusiness.com)

